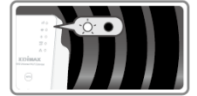




Eliminate Wi-Fi Dead Zones



Smart 3-in-1



Signal LED indicator



Easy Browser-Based Setup, No CD Required

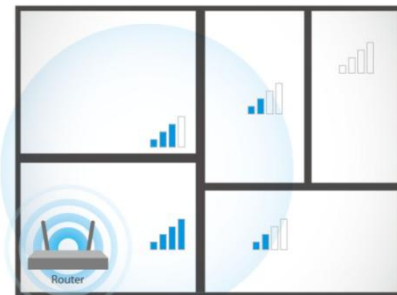
EW-7438RPN V2

N300 Universal Smart Wi-Fi Extender/Access Point

The Edimax EW-7438RPN N300 Universal Smart Wi-Fi Extender is a Wi-Fi extender with built-in power adapter in a compact design which can be plugged directly into an electrical outlet. Convenient placement allows you to double the signal coverage of your Wi-Fi network for better Wi-Fi quality in homes with many rooms or multiple floors. Featuring smart iQ Setup, installation is quick and easy and the EW-7438RPN features 3-in-1 Wi-Fi extender, access point or bridge operating modes. Just configure the mode you need for your network environment. Additionally, it complies with wireless 802.11b/g/n standards and provides data transmission rates of up to 300Mbps. With the Edimax EW-7438RPN, you can enjoy high-speed wireless networking throughout your home without additional cabling.

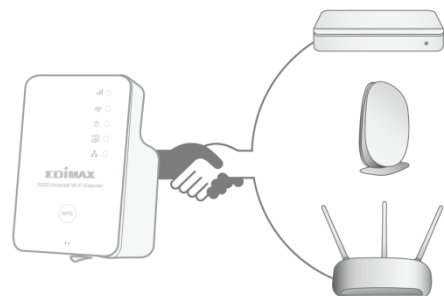
Eliminate Wi-Fi Dead Zones

Extend Wi-Fi coverage to dead zones which your existing Wi-Fi signal can't reach.



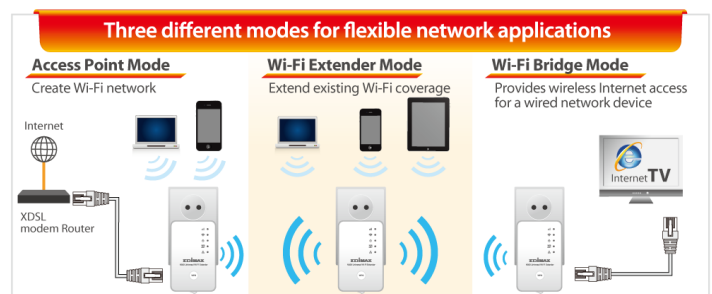
Works With Any Wireless Router

Universal compatibility and easy web-based iQ Setup for quick and easy installation



Smart 3-in-1 Extender, Access Point And Bridge

The EW-7438RPN can work as Wi-Fi extender, access point or wireless bridge. Just configure the mode you need for your network environment using the smart iQ Setup wizard and enjoy surfing the web.

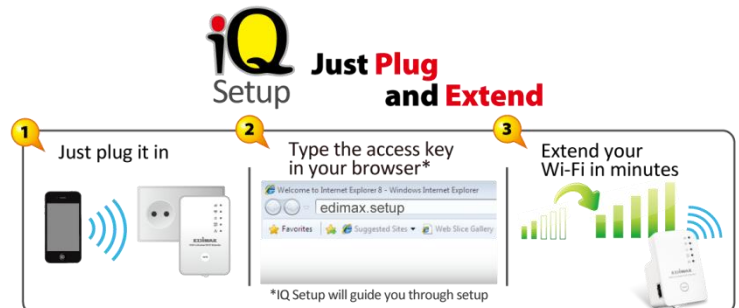


N300 Universal Smart Wi-Fi Extender/Access Point

EW-7438RPn V2

Smart iQ Setup

Features user-friendly browser-based iQ Setup for smart, automatic and quick installation. iQ Setup automatically detects the available Wi-Fi networks nearby and helps you establish a connection within seconds.



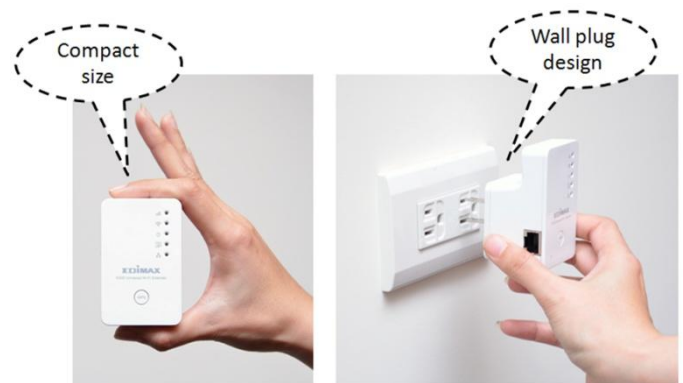
Quick And Easy WPS Installation

A WPS (Wi-Fi Protected Setup) button allows the EW-7438RPn to join an existing wireless networking at the simple push of a button.



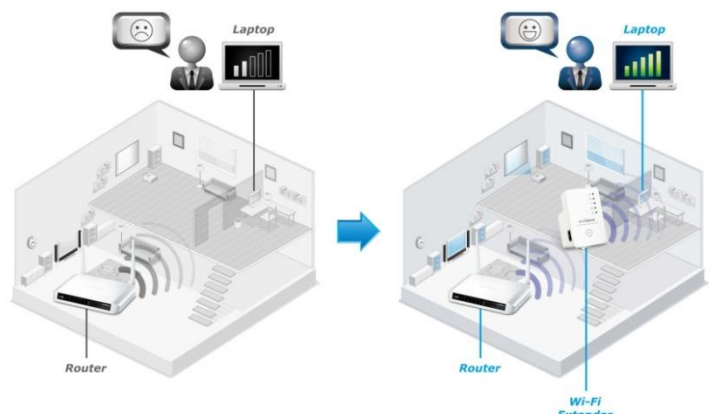
Compact, Slim Wall Plug Design

Plugs directly into an existing electrical socket – no need for an additional power cable. Not only is the Edimax EW-7438RPn slim and compact, it is designed with a built-in power adapter. This allows you to plug it directly into an electrical outlet, eliminating the need for an additional power cable. You can easily install it where your Wi-Fi signal needs enhancement and enjoy high-speed wireless performance without any hassles.



Double The Coverage Of Your Wi-Fi With Ease

Plug the extender directly into an electrical outlet and the Edimax EW-7438RPn can easily double the signal coverage of your Wi-Fi network for better Wi-Fi quality in homes with many rooms or multiple floors.

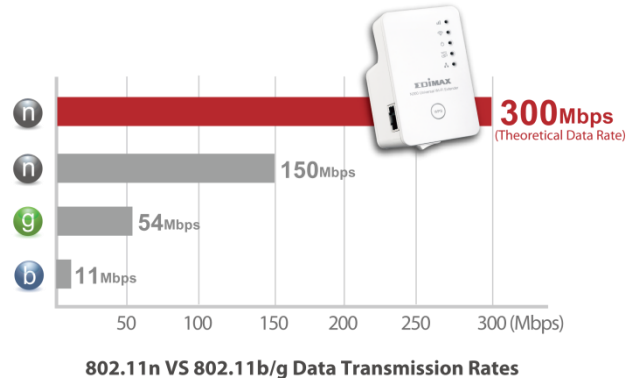


N300 Universal Smart Wi-Fi Extender/Access Point

EW-7438RPn V2

Wireless 802.11n Standard (Data Rates Up To 300Mbps)

802.11n technology is built into the EW-7438RPn to broaden its wireless coverage and eliminate dead spots within wireless range. The EW-7438RPn is also backward compatible with wireless 802.11b/g/n standards and can reach data transmission rates of up to 300Mbps when connected to wireless 802.11n devices, providing faster and more reliable wireless connections than standard 802.11b/g wireless networks.



WPA/WPA2 Advanced Wireless Encryption

Supports WEP 64/128 bit, WPA and WPA2 wireless encryption standards.



Signal Strength LED Indicator

Designed with a signal strength LED which helps you find the best setup location for optimal Wi-Fi coverage.

Signal Strength LED

- ☺ On: Excellent Signal
- ☺ Flashing: Good Signal
- ☹ Flashing Rapidly: Poor Signal
- ☹ Off: No Signal



Install the extender where the signal strength LED is on (but not flashing) for optimal Wi-Fi performance.

Green And Energy-Saving

Features a convenient power switch, enabling you to switch off the EW-7438RPn when it's not in use. LEDs can also be disabled from the extender's web control panel, saving power or avoiding light disturbances at night. The device also includes IEEE802.3az Energy Efficient Ethernet (EEE) which regulates the amount of power supplied to an Ethernet data link based on its usage – further reducing power consumption.



N300 Universal Smart Wi-Fi Extender/Access Point

EW-7438RPn V2

TECHNICAL SPECIFICATIONS

Frequency Band	Wireless Standards and Data Rates	Hardware Interface
<ul style="list-style-type: none"> 2.4GHz 	<ul style="list-style-type: none"> IEEE 802.11n (up to 300Mbps) IEEE 802.11g (up to 54Mbps) IEEE 802.11b (up to 11Mbps) 	<ul style="list-style-type: none"> 1 x 10/100Mbps Ethernet LAN port WPS button Power switch LEDs: Signal strength, wireless, power, WPS, LAN
Management	Security	System Requirements
<ul style="list-style-type: none"> 14-language user interface Upgradable firmware 	<ul style="list-style-type: none"> 64/128-bit WEP encryption and WPA-PSK, WPA2-PSK security 802.1x authentication WPS (Wi-Fi Protected Setup) User access control (MAC address) 	<ul style="list-style-type: none"> Existing wireless home network (2.4GHz) for Wi-Fi extender/Wi-Fi bridge mode, or Cable/DSL modem router for access point mode Computer with 2.4GHz b/g/n Wi-Fi capability and web browser for software configuration (Internet Explorer 7 or above, Google Chrome, Firefox or Safari latest version)
Installation	Antenna	Power Adapter
<ul style="list-style-type: none"> Multi-language iQ Setup (browser interface) Hardware WPS button 	<ul style="list-style-type: none"> 2 x high performance internal antennas 	<ul style="list-style-type: none"> Built-in AC100-240V, 0.16A 50-60Hz power module
Humidity	Temperature	Package Contents
<ul style="list-style-type: none"> 10-90% (Non-condensing) 	<ul style="list-style-type: none"> 0-40°C (32-104°F) 	<ul style="list-style-type: none"> EW-7438RPn Wi-Fi extender Quick installation guide CD with multi-language QIG and user manual RJ45 Ethernet cable Access key card
Dimensions	Weight	Certifications
<ul style="list-style-type: none"> 76 (H) x 47 (W) x 41 (L) mm 	<ul style="list-style-type: none"> 90g (0.2lb) 	<ul style="list-style-type: none"> FCC, CE, C-tick, SAA, RoHS

APPLICATION DIAGRAM

